

# FRONT CROSSMEMBER REMOVAL/INSTALLATION

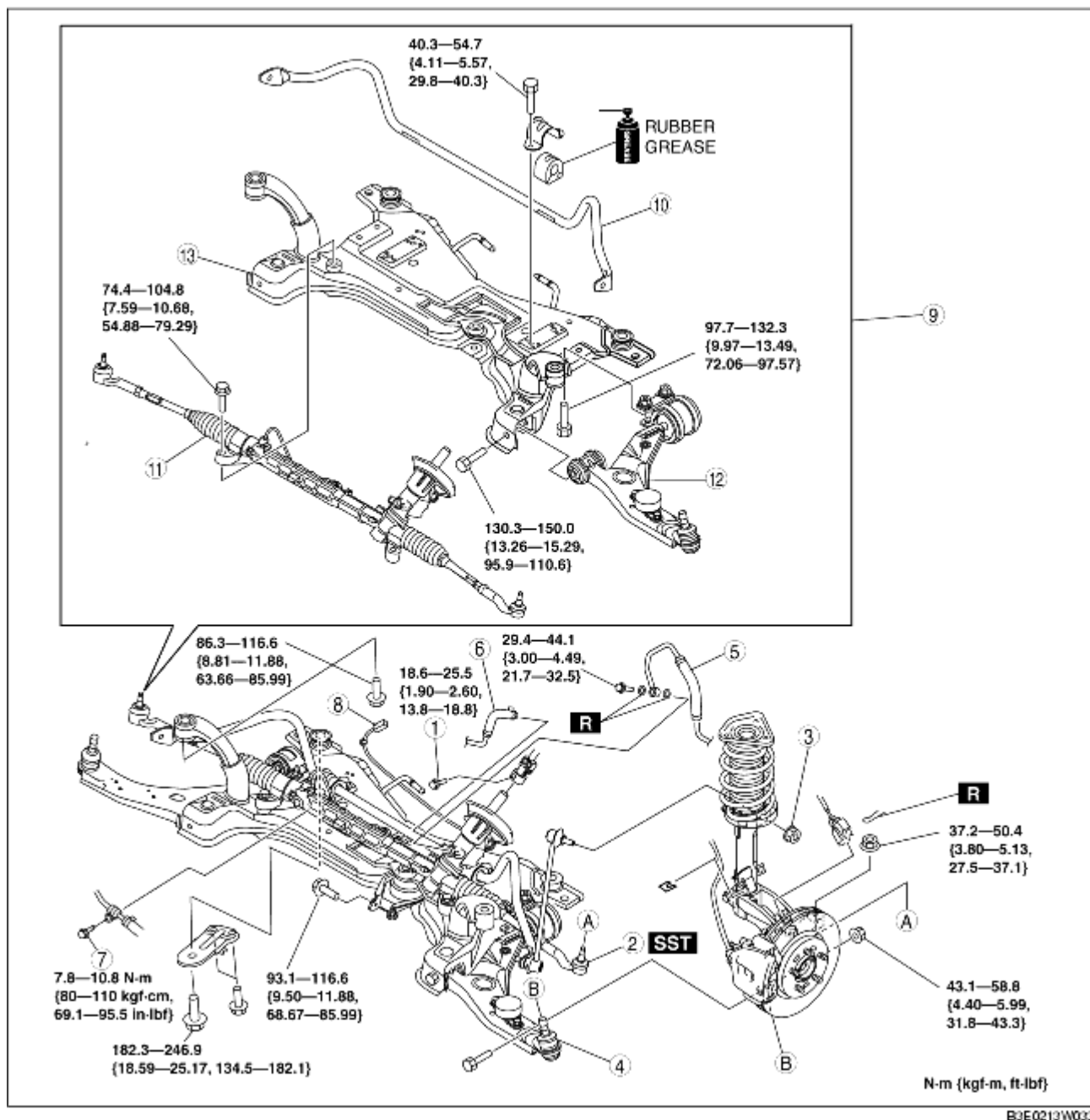
---

B3E021334800W01

## Caution

- Performing the following procedures without first removing the ABS wheel-speed sensor may possibly cause an open circuit in the wiring harness if it is pulled by mistake. Before performing the following procedures, disconnect the ABS wheel-speed sensor wiring harness connector (axle side) and fix the wiring harness to an appropriate place where it will not be pulled by mistake while servicing the vehicle.

1. Remove in the order indicated in the table.
2. Install in the reverse order of removal.
3. Inspect the wheel alignment and adjust it if necessary. (See [FRONT WHEEL ALIGNMENT](#).)



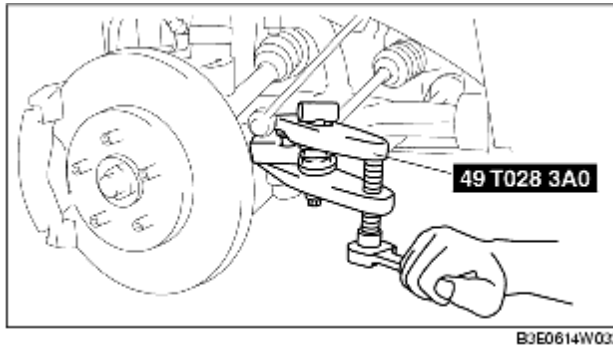
B3E0213W033

1	Bolt (intermediate shaft)
2	Tie-rod end ball joint (See <a href="#">Tie-rod End Ball Joint Removal Note.</a> )
3	Stabilizer control link upper nut
4	Lower arm ball joint
5	Pressure pipe (gear side)
6	Return hose (gear side)
7	Bolt
8	P/S angle sensor connector (only for vehicle with EHPAS) (See <a href="#">P/S Angle Sensor Connector Removal Note.</a> )
9	Front crossmember component, steering gear and linkage component (See <a href="#">Front Crossmember Component, Steering Gear and Linkage Removal Note.</a> ) (See <a href="#">Front Crossmember Component, Steering Gear and Linkage Installation Note.</a> )

10	Front stabilizer
11	Steering gear and linkage
12	Front lower arm
13	Front crossmember

## Tie-rod End Ball Joint Removal Note

1. Remove the tie-rod end locknut.
2. Detach the tie-rod end from the steering knuckle using the **SST**.

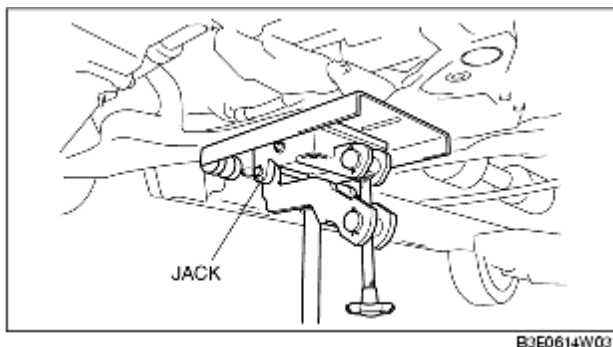


## P/S Angle Sensor Connector Removal Note

1. Remove the coolant reserve tank. (See [COOLANT RESERVE TANK REMOVAL/INSTALLATION](#).)
2. Disconnect the P/S angle sensor connector.

## Front Crossmember Component, Steering Gear and Linkage Removal Note

1. Remove the front crossmember, front stabilizer, lower arm, and steering gear as a single unit using a jack.



## Front Crossmember Component, Steering Gear and Linkage Installation Note

1. Install the front crossmember, front stabilizer, lower arm, and steering gear as a single unit using a jack.

